

**CURRENT TRANSFORMERS**

**Wound Primary CT**

**Model CTW7-150**



**APPLICATION:**

Metering and relaying.

**FREQUENCY:**

50-400 Hz.

**MAXIMUM SYSTEM VOLTAGE:**

36.5kV, BIL 150kV full wave.

**CONTINUOUS THERMAL**

**CURRENT RATING FACTOR:**

1.50 at 30°C amb., 1.33 at 55°C. amb.

Primary terminals 1/2-13 bolts with one Belleville washer.

Secondary terminals are brass screws No. 10-32 with one flatwasher and lockwasher.

Vacuum cast polyurethane resin.

Approximate weight: T100 - 125 lbs.  
T200 - 155 lbs.

Note: 200 kV BIL is available for 600:5 only.

**CAUTION: Use only the Belleville washers supplied. Tighten to between 25 to 30 foot-pounds. DO NOT OVERTIGHTEN.**

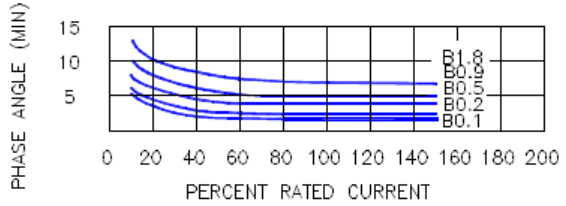
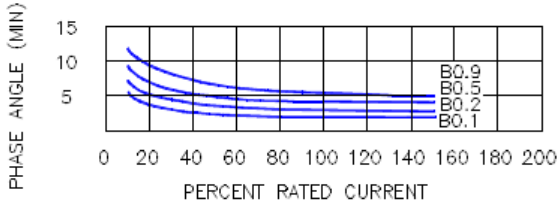
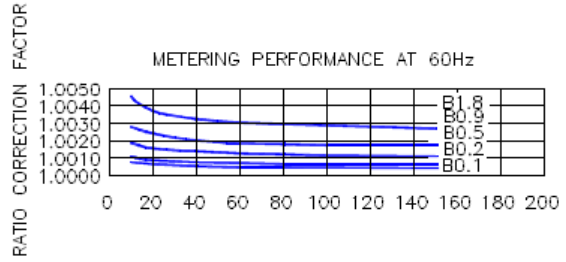
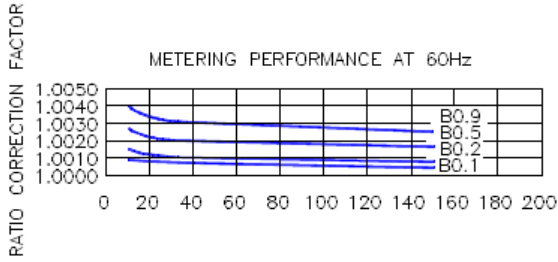
CATALOG NUMBER	CURRENT RATIO	RELAY CLASS	ANSI METERING CLASS AT 60 Hz					THERMAL CURRENT RATING 1 SECOND RMS AMPS
			BO.1	BO.2	BO.5	BO.9	B1.8	
CTW7-150-T100-100	10:5	T100	0.3	0.3	0.3	0.3	0.6	900*
CTW7-150-T100-150	15:5	T100	0.3	0.3	0.3	0.3	0.6	1700*
CTW7-150-T100-250	25:5	T100	0.3	0.3	0.3	0.3	0.6	2700*
CTW7-150-T100-500	50:5	T100	0.3	0.3	0.3	0.3	0.6	4700*
CTW7-150-T100-750	75:5	T100	0.3	0.3	0.3	0.3	0.6	12900*
CTW7-150-T100-101	100:5	T100	0.3	0.3	0.3	0.3	0.6	12900*
CTW7-150-T100-151	150:5	T100	0.3	0.3	0.3	0.3	0.6	23000*
CTW7-150-T100-201	200:5	T100	0.3	0.3	0.3	0.3	0.6	28200*
CTW7-150-T100-301	300:5	T100	0.3	0.3	0.3	0.3	0.6	48900*
CTW7-150-T100-401	400:5	T100	0.3	0.3	0.3	0.3	0.6	66200*
CTW7-150-T100-601	600:5	T100	0.3	0.3	0.3	0.3	0.6	66200*

\*With a burden of BO.2 or greater connected to the secondary.

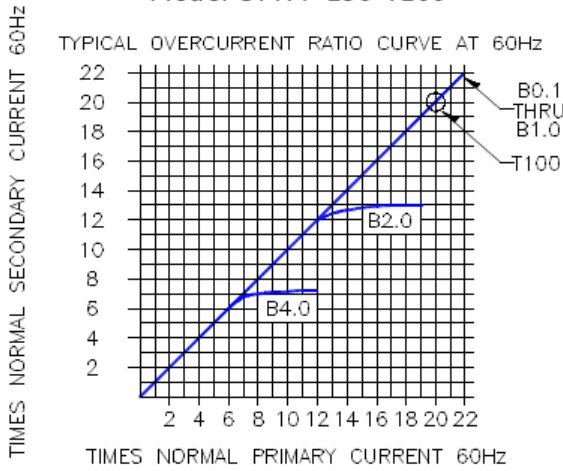
CTW7-150-T200-100	10:5	T200	0.3	0.3	0.3	0.3	0.3	900**
CTW7-150-T200-150	15:5	T200	0.3	0.3	0.3	0.3	0.3	1700**
CTW7-150-T200-250	25:5	T200	0.3	0.3	0.3	0.3	0.3	2700**
CTW7-150-T200-500	50:5	T200	0.3	0.3	0.3	0.3	0.3	4700**
CTW7-150-T200-750	75:5	T200	0.3	0.3	0.3	0.3	0.3	12900**
CTW7-150-T200-101	100:5	T200	0.3	0.3	0.3	0.3	0.3	12900**
CTW7-150-T200-151	150:5	T200	0.3	0.3	0.3	0.3	0.3	23000**
CTW7-150-T200-201	200:5	T200	0.3	0.3	0.3	0.3	0.3	28200**
CTW7-150-T200-301	300:5	T200	0.3	0.3	0.3	0.3	0.3	48900**
CTW7-150-T200-401	400:5	T200	0.3	0.3	0.3	0.3	0.3	66200**
CTW7-150-T200-601	600:5	T200	0.3	0.3	0.3	0.3	0.3	66200**

\*\*With a burden of BO.5 or greater connected to the secondary.

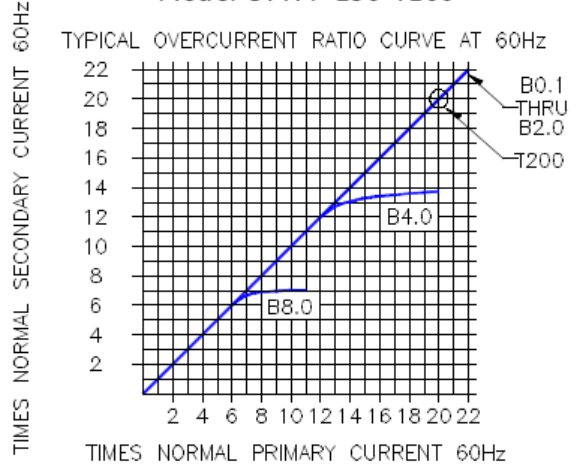
## Model CTW7--150 Wound Primary CT



### Model CTW7-150-T100



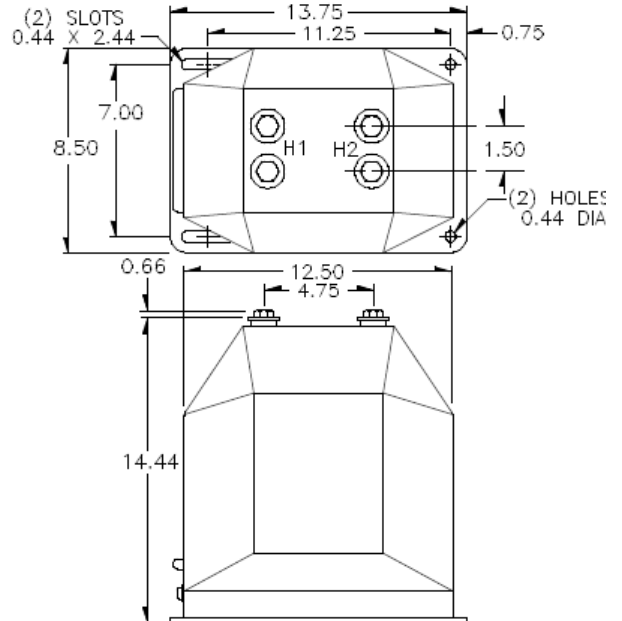
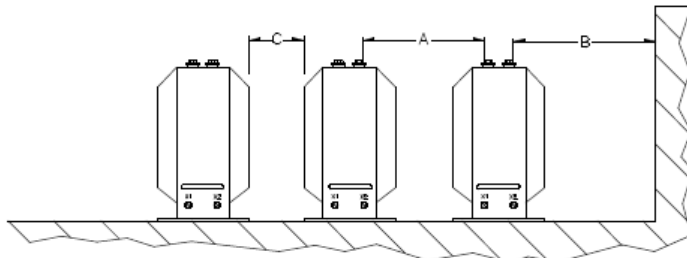
### Model CTW7-150-T200



#### RECOMMENDED MINIMUM SPACINGS

- A = HV to HV = 11.50" minimum.
- B = HV to Ground in Air = 11.50" minimum.
- C = Unit to Unit = 2.00" minimum.

Recommended spacing are for guidance only. User needs to set appropriate values to assure performance for high potential test, impulse test, high humidity, partial discharge, high altitude, and other considerations like configuration.



**CURRENT TRANSFORMERS**  
**Wound Primary CT**  
**Model CTWH7-150-T200**



Dual bars spacing is 1/2 inch.  
Approximate weight 180 lbs.

Note: 200 kV BIL is available. Except for 3000:5 ratio.

**APPLICATION:**

Metering and relaying.

**FREQUENCY:**

50-400 Hz.

**MAXIMUM SYSTEM VOLTAGE:**

3.65kV, BIL 150kV full wave.

**CONTINUOUS THERMAL  
CURRENT RATING FACTOR:**

1.50 at 30°C amb., 1.33 at 55°C. amb.

2000:5 = 1.33 at 30°C. amb., 1.00 at 55°C. amb.

2500:5 and 3000:5 = 1.00 at 30°C. amb., 0.85 at 55°C. amb.

Primary terminals are plated copper bars, configured as specified.

Secondary terminals are brass screws No. 10-32 with one flatwasher and lockwasher.

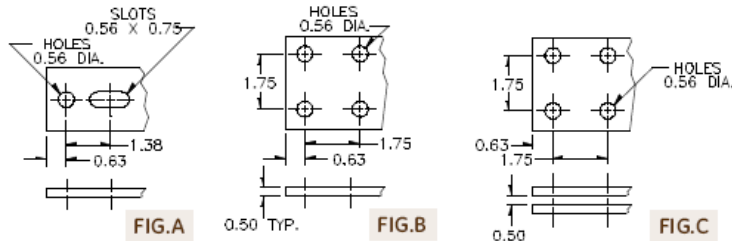
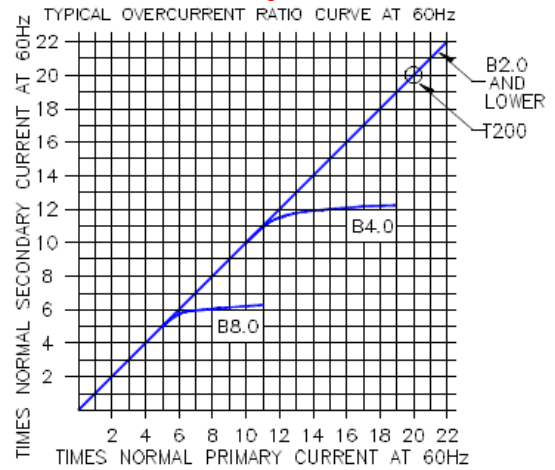
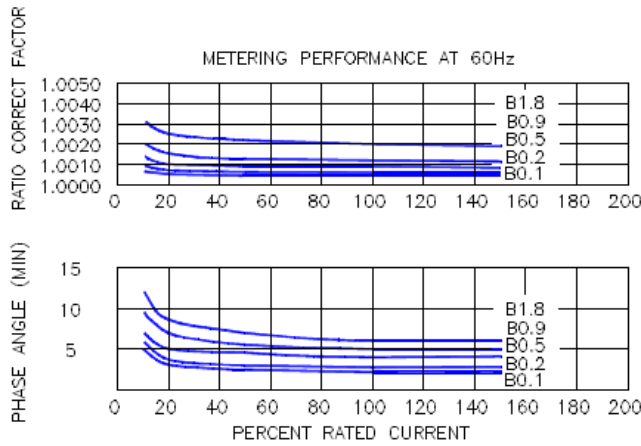
Vacuum cast polyurethane resin.

CATALOG NUMBER	CURRENT RATIO	RELAY CLASS	ANSI METERING CLASS AT 60HZ					* THERMAL CURRENT RATING 1 SECOND RMS AMPS
			BO.1	BO.2	BO.5	BO.9	B1.8	
CTWH7-150-T200-801-**	800:5	T200	0.3	0.3	0.3	0.3	0.3	87000
CTWH7-150-T200-200-**	1000:5	T200	0.3	0.3	0.3	0.3	0.3	133000
CTWH7-150-T200-122-**	1200:5	T200	0.3	0.3	0.3	0.3	0.3	133000
CTWH7-150-T200-152-**	1500:5	T200	0.3	0.3	0.3	0.3	0.3	266000
CTWH7-150-T200-202-**	2000:5	T200	0.3	0.3	0.3	0.3	0.3	266000
CTWH7-150-T200-252-**	2500:5	T200	0.3	0.3	0.3	0.3	0.3	266000
CTWH7-150-T200-302-**	3000:5	T200	0.3	0.3	0.3	0.3	0.3	358000

\*With a burden of BO.1 or greater connected to the secondary.

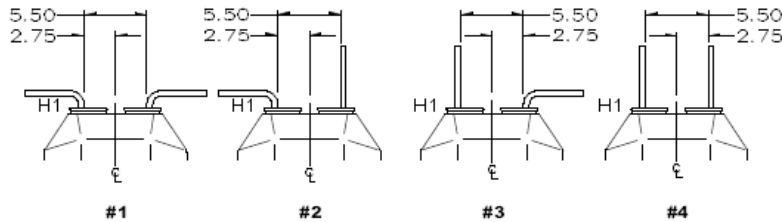
\*\*Specify primary bus arrangement number (1 through 8).

# Model CTWH7--150--T200 Wound Primary CT

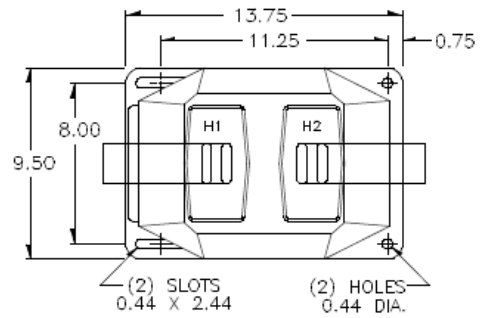
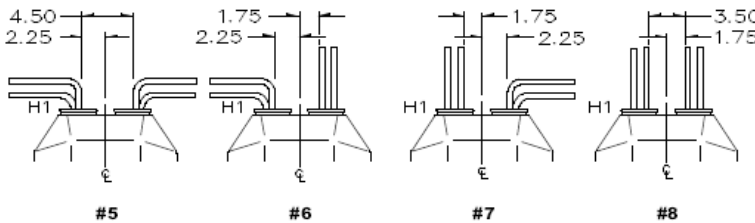


RATIO	PRIMARY TERMINALS	FIG.
800:5	ONE 1/2 x 2	A
1000:5	ONE 1/2 x 3	B
1200:5	ONE 1/2 x 3	B
1500:5	TWO 1/2 x 3	C
2000:5	TWO 1/2 x 3	C
2500:5	TWO 1/2 x 3	C
3000:5	TWO 1/2 x 4	C

ALL BARS HAVE FULL RADIUS EDGE



## Primary Bar Arrangements



## RECOMMENDED MINIMUM SPACINGS

- A = Unit to Unit = 11.50" minimum.
- B = HV to Ground in Air = 11.50" minimum.

Recommended spacing are for guidance only. User needs to set appropriate values to assure performance for high potential test, impulse test, high humidity, partial discharge, high altitude, and other considerations like configuration.

