

**CURRENT TRANSFORMERS**  
**Wound Primary CT**  
**Model CTW6-125**



Approximate weight: T100 - 95 lbs.  
T200 - 115 lbs.

**APPLICATION:**  
Metering and relaying.

**FREQUENCY:**  
50-400 Hz.

**MAXIMUM SYSTEM VOLTAGE:**  
25.5kV, BIL125kV full wave.

**CONTINUOUS THERMAL CURRENT RATING FACTOR:**  
1.50 at 30oC amb., 1.33 at 55oC. amb.

Primary terminals 1/2-13 bolts with one Belleville washer.

Secondary terminals are brass screws No. 10-32 with one flatwasher and lockwasher.

Vacuum cast polyurethane resin.

**CAUTION: Use only the Belleville washers supplied. Tighten to between 25 to 30 foot-pounds. DO NOT OVERTIGHTEN.**

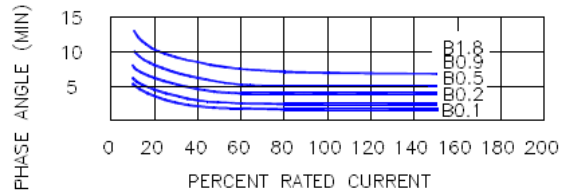
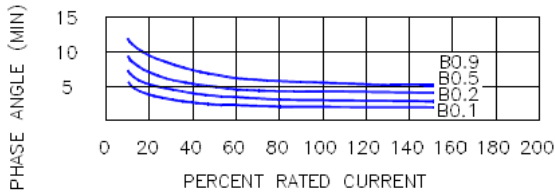
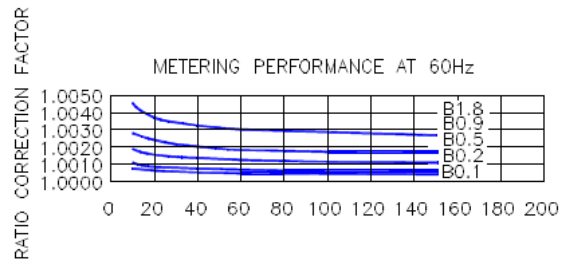
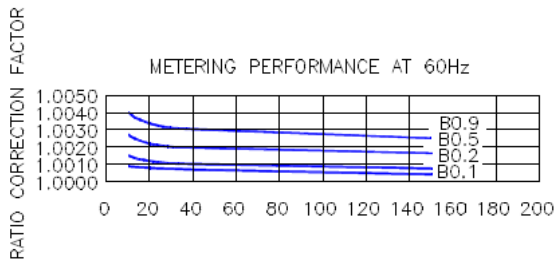
CATALOG NUMBER	CURRENT RATIO	RELAY CLASS	ANSI METERING CLASS AT 60HZ					THERMAL CURRENT RATING 1 SECOND RMS AMPS
			BO.1	BO.2	BO.5	BO.9	B1.8	
CTW6-125-T100-100	10.5	T100	0.3	0.3	0.3	0.3	0.6	900*
CTW6-125-T100-150	15.5	T100	0.3	0.3	0.3	0.3	0.6	1700*
CTW6-125-T100-250	25.5	T100	0.3	0.3	0.3	0.3	0.6	2700*
CTW6-125-T100-500	50.5	T100	0.3	0.3	0.3	0.3	0.6	4700*
CTW6-125-T100-750	75.5	T100	0.3	0.3	0.3	0.3	0.6	12900*
CTW6-125-T100-101	100.5	T100	0.3	0.3	0.3	0.3	0.6	12900*
CTW6-125-T100-151	150.5	T100	0.3	0.3	0.3	0.3	0.6	23000*
CTW6-125-T100-201	200.5	T100	0.3	0.3	0.3	0.3	0.6	28200*
CTW6-125-T100-301	300.5	T100	0.3	0.3	0.3	0.3	0.6	48900*
CTW6-125-T100-401	400.5	T100	0.3	0.3	0.3	0.3	0.6	66200*
CTW6-125-T100-601	600.5	T100	0.3	0.3	0.3	0.3	0.6	66200*

\*With a burden of BO.2 or greater connected to the secondary.

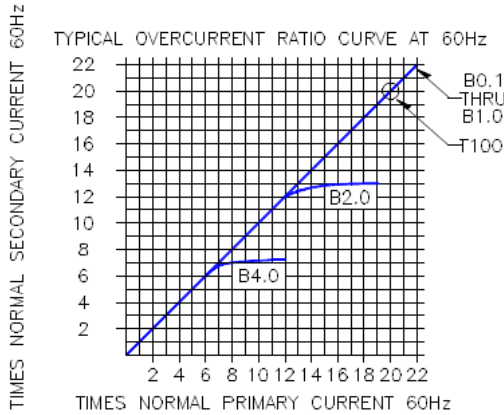
CATALOG NUMBER	CURRENT RATIO	RELAY CLASS	ANSI METERING CLASS AT 60HZ					THERMAL CURRENT RATING 1 SECOND RMS AMPS
			BO.1	BO.2	BO.5	BO.9	B1.8	
CTW6-125-T200-100	10.5	T200	0.3	0.3	0.3	0.3	0.3	900*
CTW6-125-T200-150	15.5	T200	0.3	0.3	0.3	0.3	0.3	1700*
CTW6-125-T200-250	25.5	T200	0.3	0.3	0.3	0.3	0.3	2700*
CTW6-125-T200-500	50.5	T200	0.3	0.3	0.3	0.3	0.3	4700*
CTW6-125-T200-750	75.5	T200	0.3	0.3	0.3	0.3	0.3	12900*
CTW6-125-T200-101	100.5	T200	0.3	0.3	0.3	0.3	0.3	12900*
CTW6-125-T200-151	150.5	T200	0.3	0.3	0.3	0.3	0.3	23000*
CTW6-125-T200-201	200.5	T200	0.3	0.3	0.3	0.3	0.3	28200*
CTW6-125-T200-301	300.5	T200	0.3	0.3	0.3	0.3	0.3	48900*
CTW6-125-T200-401	400.5	T200	0.3	0.3	0.3	0.3	0.3	66200*
CTW6-125-T200-601	600.5	T200	0.3	0.3	0.3	0.3	0.3	66200*

\*\*With a burden of BO.5 or greater connected to the secondary.

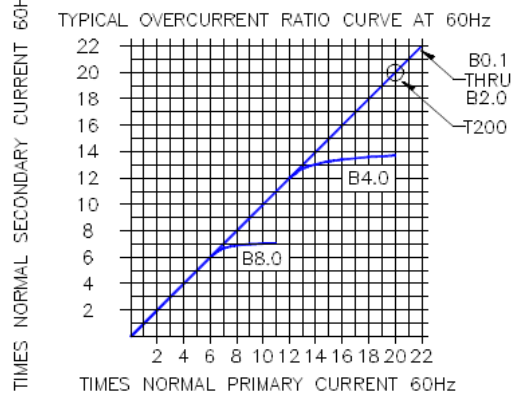
# Model CTW6--125 Wound Primary CT



## Model CTW-125-T100



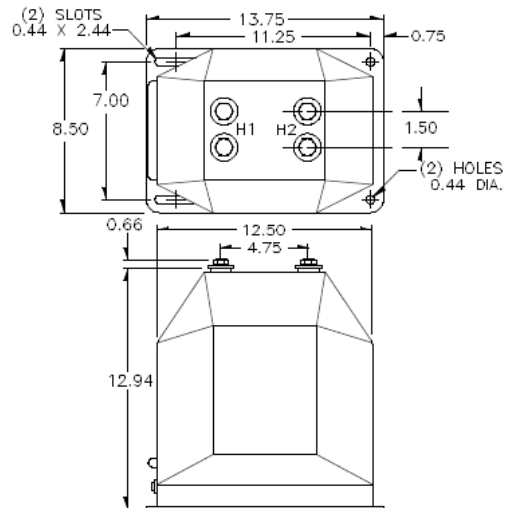
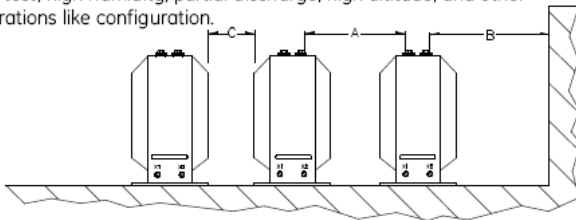
## Model CTW-125-T200



### RECOMMENDED MINIMUM SPACINGS

- A = HV to HV = 8.50" minimum.
- B = HV to Ground in Air = 8.50" minimum.
- C = Unit to Unit = 2.00" minimum.

Recommended spacing are for guidance only. User needs to set appropriate values to assure performance for high potential test, impulse test, high humidity, partial discharge, high altitude, and other considerations like configuration.



**CURRENT TRANSFORMERS**  
**Wound Primary CT**  
**Model CTWH6-125-T200**



Dual bars spacing is 1/2 inch.  
Approximate weight 150 lbs.

**APPLICATION:**  
Metering and relaying.

**FREQUENCY:**  
50-400 Hz.

**MAXIMUM SYSTEM VOLTAGE:**  
25.5kV, BIL 125kV full wave.

**CONTINUOUS THERMAL  
CURRENT RATING FACTOR:**  
1.50 at 30oC amb., 1.33 at 55oC. amb.

2000:5 = 1.33 at 30oC. amb., 1.00 at 55oC. amb.

2500:5 and 3000:5 = 1.00 at 30oC. amb., 0.85 at 55oC. amb.

Primary terminals are plated copper bars,  
configured as specified.

Secondary terminals are brass screws No. 10-32  
with one flatwasher and lockwasher.

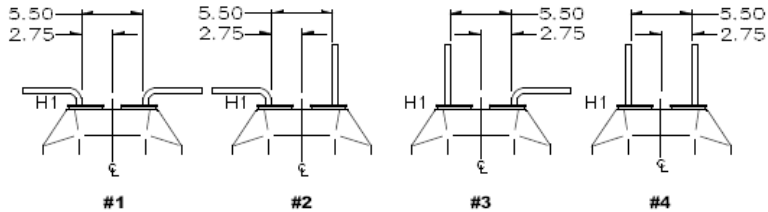
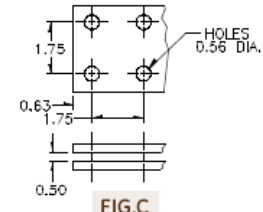
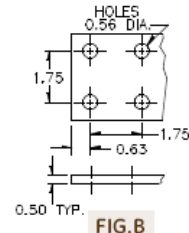
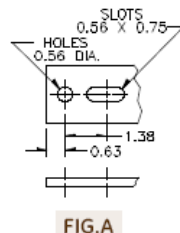
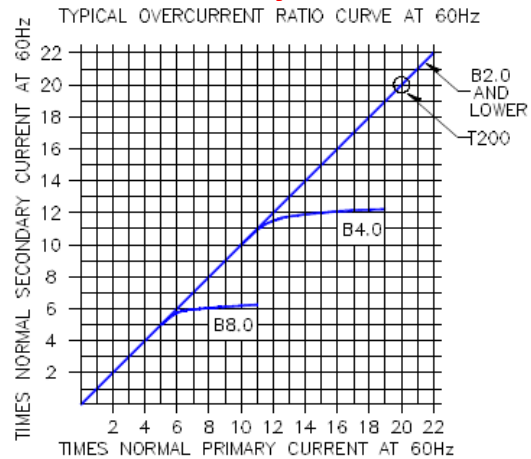
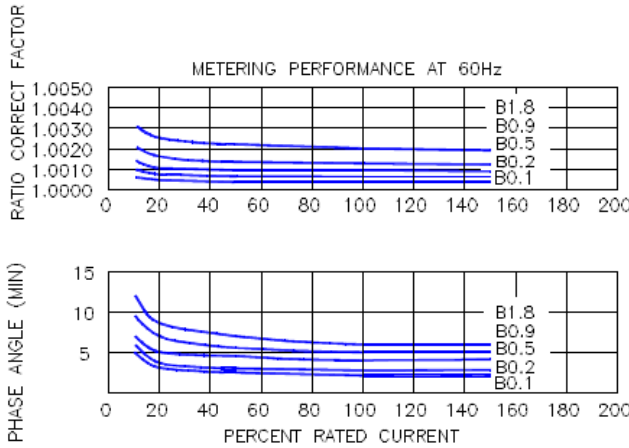
Vacuum cast polyurethane resin.

CATALOG NUMBER	CURRENT RATIO	RELAY CLASS	ANSI METERING CLASS AT 60HZ					* THERMAL CURRENT RATING 1 SECOND RMS AMPS
			BO.1	BO.2	BO.5	BO.9	B1.8	
CTWH6-125-T200-801-**	800:5	T200	0.3	0.3	0.3	0.3	0.3	87000
CTWH6-125-T200-200-**	1000:5	T200	0.3	0.3	0.3	0.3	0.3	13300
CTWH6-125-T200-122-**	1200:5	T200	0.3	0.3	0.3	0.3	0.3	13300
CTWH6-125-T200-152-**	1500:5	T200	0.3	0.3	0.3	0.3	0.3	266000
CTWH6-125-T200-202-**	2000:5	T200	0.3	0.3	0.3	0.3	0.3	266000
CTWH6-125-T200-252-**	2500:5	T200	0.3	0.3	0.3	0.3	0.3	266000
CTWH6-125-T200-302-**	3000:5	T200	0.3	0.3	0.3	0.3	0.3	358000

\*With a burden of BO.1 or greater connected to the secondary.

\*\*Specify primary bus arrangement number (1 through 8).

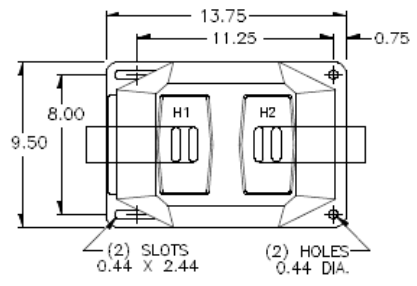
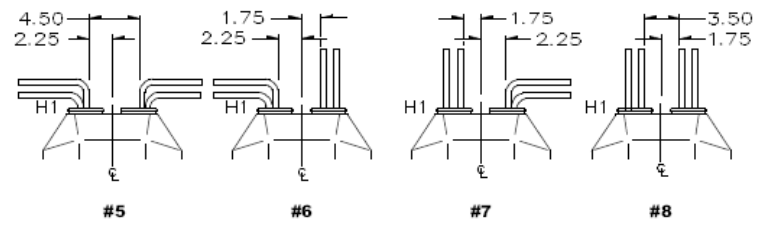
# Model CTWH6--125--T200 Wound Primary CT



RATIO	PRIMARY TERMINALS	FIG.
800.5	One 1/2 X 2	A
1000.5	One 1/2 X 3	B
1200.5	One 1/2 X 3	B
1500.5	Two 1/2 X 3	C
2000.5	Two 1/2 X 3	C
2500.5	Two 1/2 X 3	C
3000.5	Two 1/2 X 4	C

ALL BARS HAVE FULL RADIUS EDGE

## Primary Bar Arrangements



## RECOMMENDED MINIMUM SPACINGS

A = Unit to Unit = 8.50" minimum.

B = HV to Ground in Air = 8.50" minimum.

Recommended spacing are for guidance only. User needs to set appropriate values to assure performance for high potential test, impulse test, high humidity, partial discharge, high altitude, and other considerations like configuration.

