

Single Phase Potential Transformers

PTG5

UL & CSA APPROVED

15.5 kV CLASS

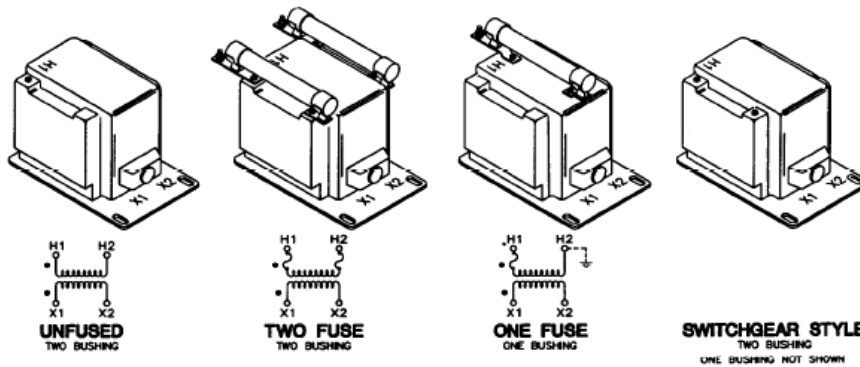
1500 VA

Specifications

INPUT VOLTAGE: 7.2 kv – 14.4 kv
OUTPUT VOLTAGE: 120V-60Hz (Except 50Hz Model)
INSULATION CLASS: 15.5 kV
BASIC IMPULSE LEVEL: 110 Kv BIL
THERMAL RATING: 1500 VA at 30 DEG. C. amb
 1000 VA at 55 DEG. C. amb
ACCURACY CLASS: 0.3 WXYZ, 1.2ZZ at 100%
 rated voltage (with 120 V based ANSI burden)
 0.3 WXY, 1.2 Z at 58%
 rated voltage (with 69.3 V based ANSI burden)
WEIGHT: 85 lbs.

Applications and Features

ASSEMBLY IS ENCASED IN PLASTIC ENCLOSURE AND VACUUM ENCAPSULATED IN POLYURETHANE RESIN.
 MOUNTING BASE IS PLATED STEEL.
 MEETS ANSI C57.13 and IEC 44-2 STANDARDS
 PARTIAL DISCHARGE TESTED TO MEET CANADIAN STANDARDS CAN3-C13-M83. (OPTIONAL TESTING TO IEC STANDARD ALSO AVAILBLE.)
 PRIMARY TERMINALS ARE 1/4-20 BRASS SCREWS. SECONDARY TERMINALS ARE 10-32 BRASS SCREWS.
 FUSES HAVE 165" DIAMETER CAPS AND 11.5" CLIP CENTERS



POTENTIAL TRANSFORMERS CONNECTED LINE- TO-GROUND ARE NOT GROUNDING TRANSFORMERS. THEY MUST NOT BE OPERATED WITH THEIR SECONDARIES IN CLOSED DELTA BECAUSE EXCESSIVE CURRENTS MAY FLOW IN THE DELTA.

USE SINGLE BUSHING WITH SINGLE FUSE IN WYE CONNECTIONS AND TWO BUSHINGS WITH TWO FUSES IN DELTA CONNECTIONS.

TWO-FUSE TRANSFORMERS SHOULD NOT BE USED IN WYE CONNECITONS. CONNECT ONE LEAD OF EACH TRANSFORMER DIRECTLY TO NEUTRAL WITH A FUSE IN THE LINE SIDE OF THE PRIMARY ONLY. DO NOT USE A FUSE IN THE NEUTRAL SIDE.

	GROUP	PRIMARY	OUTPUT	TWO-FUSE	FUSE CLIPS	SWITCHGEAR
		VOLTAGE	VOLTAGE	MODELS	ONLY	MODELS
TWO BUSHING MODELS	1	7200*	120-60Hz	PTG5-2-722FF	PTG5-2-722CC	PTG5-2-722SS
	1	8400*	120-60Hz	PTG5-2-842FF	PTG5-2-842CC	PTG5-2-842SS
	2	11000	120-50Hz	PTG5-2-113FF	PTG5-2-113CC	PTG5-2-113SS
	2	12000*	120-60Hz	PTG5-2-123FF	PTG5-2-123CC	PTG5-2-123SS
	2	13200	120-60Hz	PTG5-2-1322FF	PTG5-2-1322CC	PTG5-2-1322SS
	2	14400*	120-60Hz	PTG5-2-1442FF	PTG5-2-1442CC	PTG5-2-1442SS
ONE BUSHING MODELS	GROUP	PRIMARY	OUTPUT	ONE-FUSE	FUSE CLIPS	SWITCHGEAR
		VOLTAGE	VOLTAGE	MODELS	ONLY	MODELS
	4A	7200*	120-60Hz	PTG5-1-722F	PTG5-2-722C	PTG5-2-722S
	4A	8400*	120-60Hz	PTG5-1-842F	PTG5-2-842C	PTG5-2-842S
	4B	11000	120-50Hz	PTG5-1-113F	PTG5-2-113C	PTG5-2-113S
	4B	12000*	120-60Hz	PTG5-1-123F	PTG5-2-123C	PTG5-2-123S
	4B	13200	120-60Hz	PTG5-1-1322F	PTG5-2-1322C	PTG5-2-1322S
4B	14400*	120-60Hz	PTG5-1-1442F	PTG5-2-1442C	PTG5-2-1442S	

* approved for revenue metering in Canada by Industry Canada Approval No. AE-0431 Rev. 01

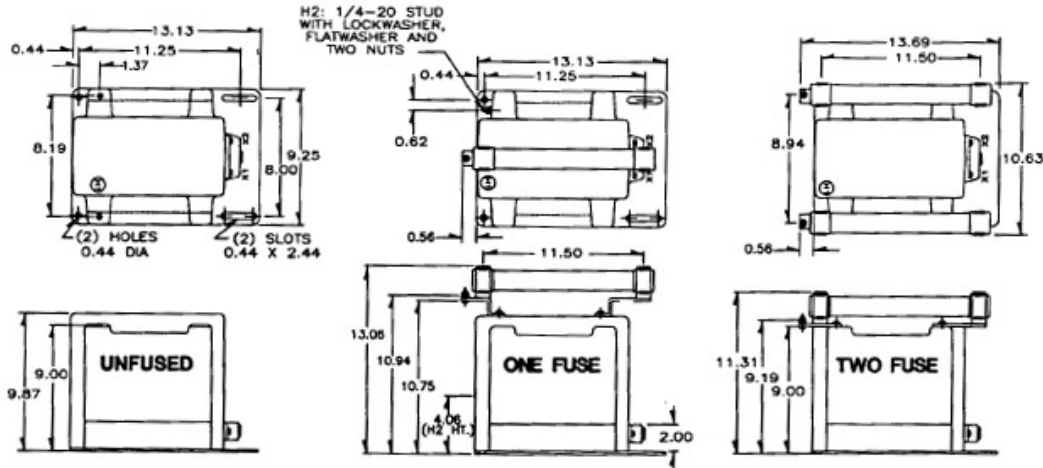
Single Phase Potential Transformers

PTG5

UL & CSA APPROVED

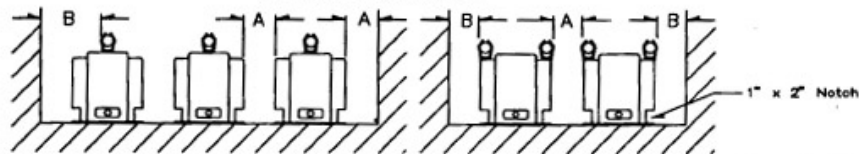
15.5 kV CLASS

1500 VA



RECOMMENDED SPACINGS

A=UNIT TO UNIT OR TO GROUND=1.25" MIN.
B=HV TO GROUND IN AIR=0.5" MIN.



Recommended spacings are for guidance only. User needs to set appropriate values to assure performance for: high potential test; impulse test; high humidity; partial discharge; high altitude; and other considerations like configuration.

FUSE FOR MODEL PTG5 TRANSFORMER	RATING VOLTS	INTERRUPTING AMPERES(SYM)	SUGGESTED RATING + CONTINUOUS AMPERES	CAP DIA. INCHES	LENGTH INCHES	CLIP CENTERS INCHES
7200:120V	15.5kV	80,000	1.0E	1.63	13	11.50
8400:120V	15.5kV	80,000	1.0E	1.63	13	11.50
11000:110V	15.5kV	80,000	0.5E	1.63	13	11.50
12000:120V	15.5kV	80,000	0.5E	1.63	13	11.50
13200:120V	15.5kV	80,000	0.5E	1.63	13	11.50
14400:120V	15.5kV	80,000	0.5E	1.63	13	11.50

The circle diagram can be used to predict the performance of a potential transformer for various loads and power factors. A convenient scale of volt-amperes is shown on the unity power factor line (u.p.f.) and commences at the zero or no-load locus. To use the diagram, measure the known V.A. and scribe an arc about the 'zero' locus of a length that contains the angle of the burden power factor. The point at which the arc terminates is the error locus in phase angle minutes and ratio correction factor.

