

3 Phase 3 Wire Potential Transformers

3PT3

UL Recognized

5.6KV

500 VA

Specifications

INPUT VOLTAGE: 840 TO 4800 VAC
OUTPUT VOLTAGE: 120V-60Hz
INSULATION CLASS: 5000 VOLTS
BASIC IMPULSE LEVEL: 60Kv BIL
BURDEN RATING: 500 VA at 35 DEG. C
 350 VA at 55 DEG. C
ACCURACY CLASS: 0.3 WX, 0.6MY, 12Z at FULL SCALE
 (with 120V based ANSI BURDEN.)
PRIMARY TERMINALS: 10-32 BRASS SCREWS
WEIGHT: 38lbs.

Applications and Features

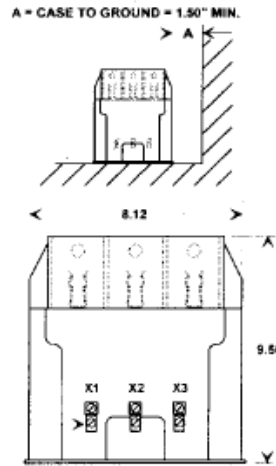
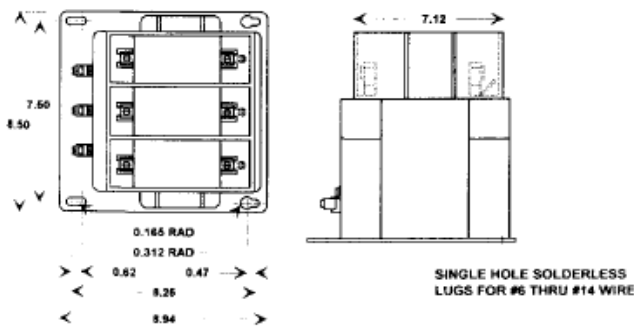
ASSEMBLY IS ENCASED IN PLASTIC ENCLOSURE AND VACUUM ENCAPSULATED IN POLYURETHANE RESIN.

MEET ANSI C57.13 and IEC 185 STANDARDS

PARTIAL DISCHARGE TESTED TO MEET CANADIAN STANDARDS CAN3-C13-M83. (OPTIONAL TESTING TO IEC STANDARD ALSO AVAILABLE).

PRIMARY TERMINALS ARE 10-32 BRASS SCREWS WITH FLATWASHER AND LOCKWASHER

CASE DIMENSIONS (INCHES)



TRANSFORMER SELECTION CHART				
PRIMARY VOLTAGE	OUTPUT VOLTAGE	RATIO	MODELS	FUSE RATING
840 VAC	120V	7:1	3PT3-841	1.0 E
1200 VAC	120V	10:1	3PT3-122	1.0 E
2400 VAC	120V	20:1	3PT3-242	0.5 E
4200 VAC	120V	35:1	3PT3-422	0.5 E
4800 VAC	120V	40:1	3PT3-482	0.5 E

