

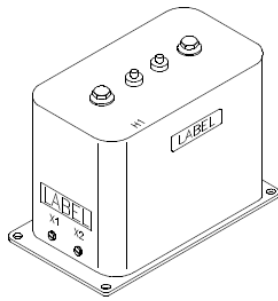
CURRENT TRANSFORMERS

**Wound Primary CT
Models CTW5-L-110
& CTWH5-L-110**

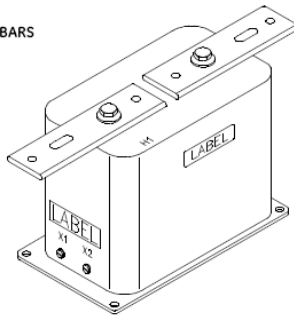
REGULATORY AGENCY APPROVALS



Manufactured to meet the requirements of ANSI/IEEE C57.13.
Classified by U.L. in accordance with IEC 44-1



Model CTW5-L
WITHOUT PRIMARY BARS



Model CTWH5-L
WITH PRIMARY BARS

APPLICATION:

Metering and relaying.

FREQUENCY:

50-400 Hz.

MAXIMUM SYSTEM VOLTAGE:

15.5kV, BIL 110kV.

**CONTINUOUS THERMAL
CURRENT RATING FACTOR:**

1.0 at 30°C amb., 0.85 at 55°C amb.

Primary terminals are 1/2-13 bolts with one Belleville washer. Secondary terminals are brass screws No. 10-32 with one flatwasher, lockwasher.

Vacuum cast in polyurethane resin.

Other ratios, secondary currents and dual ratios are available.

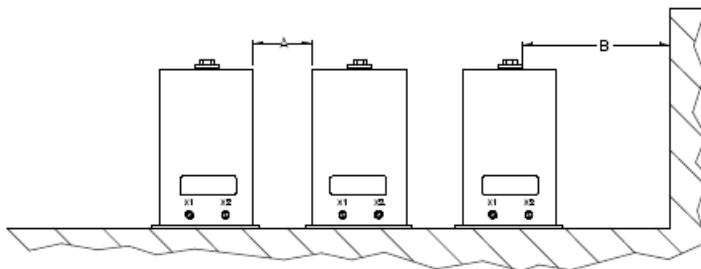
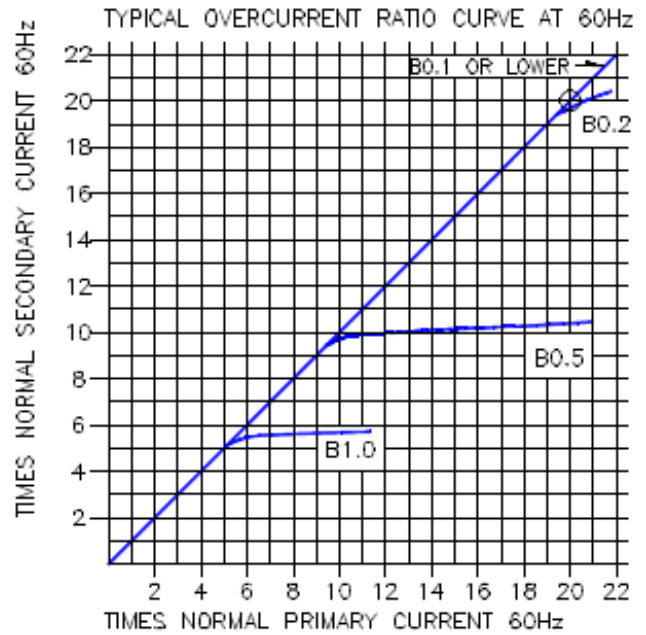
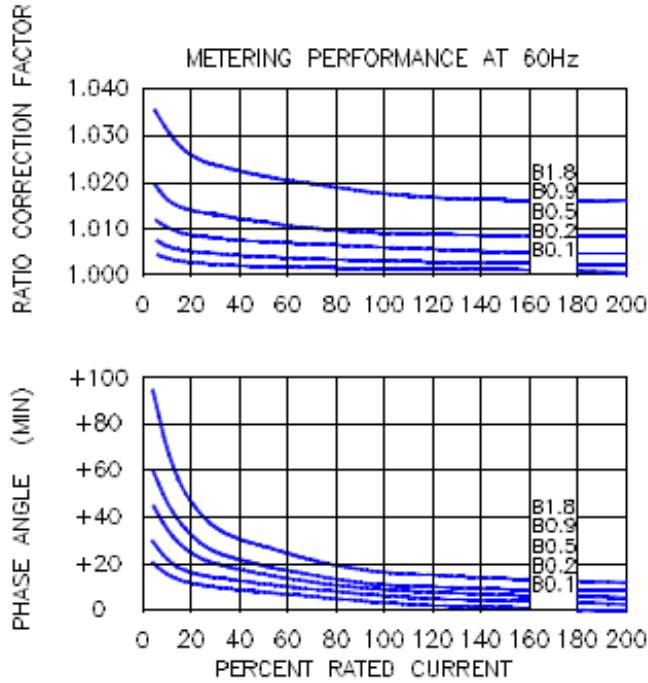
Approximate weight 34 lbs.

CAUTION: Use only the Belleville washers Supplied. Tighten to between 25 to 30 foot-pounds. DO NOT OVERTIGHTEN

CATALOG* NUMBER	CURRENT RATIO	RELAY CLASS	ANSI METERING CLASS AT 60HZ					THERMAL CURRENT RATING 1 SECOND RMS AMPS
			BO.1	BO.2	BO.5	BO.9	B1.8	
CTW5-L-110-T20-050	5.5	T20	0.3	0.3	0.6	1.2	2.4	375
CTW5-L-110-T20-100	10.5	T20	0.3	0.3	0.6	1.2	2.4	590
CTW5-L-110-T20-150	15.5	T20	0.3	0.3	0.6	1.2	2.4	1200
CTW5-L-110-T20-250	25.5	T20	0.3	0.3	0.6	1.2	2.4	1700
CTW5-L-110-T20-300	30.5	T20	0.3	0.3	0.6	1.2	2.4	1700
CTW5-L-110-T20-400	40.5	T20	0.3	0.3	0.6	1.2	2.4	2400
CTW5-L-110-T20-500	50.5	T20	0.3	0.3	0.6	1.2	2.4	4715
CTW5-L-110-T25-750	75.5	T25	0.3	0.3	0.6	1.2	2.4	4715
CTW5-L-110-T25-101	100.5	T25	0.3	0.3	0.6	1.2	2.4	8625
CTW5-L-110-T25-151	150.5	T25	0.3	0.3	0.6	1.2	2.4	11500
CTW5-L-110-T30-201	200.5	T30	0.3	0.3	0.6	1.2	2.4	11500
CTW5-L-110-T20-251	250.5	T20	0.3	0.3	0.6	1.2	2.4	21700
CTW5-L-110-T25-301	300.5	T25	0.3	0.3	0.6	1.2	2.4	21700
CTW5-L-110-T30-401	400.5	T30	0.3	0.3	0.6	1.2	2.4	44700
CTW5-L-110-T35-501	500.5	T35	0.3	0.3	0.3	0.6	1.2	44700
CTW5-L-110-T40-601	600.5	T40	0.3	0.3	0.3	0.6	1.2	44700

*For ordering with primary bars, change model number to CTWH5-L.
A test card is provided with each unit.

Models CTW5--L--110 & CTWH5--L--110 Wound Primary CT



RECOMMENDED MINIMUM SPACINGS

A = Unit to Unit = 2.00" minimum.

B = HV to Ground in Air = 6.50" minimum.

Recommended spacing are for guidance only. User needs to appropriate values to assure performance for high potential impulse test, high humidity, partial discharge, high altitude, other considerations like configuration.

PRIMARY CURRENT	BAR SIZES	
	A	B
5 TO 200A	0.25	1.50
250 TO 1200A	0.38	2.00

