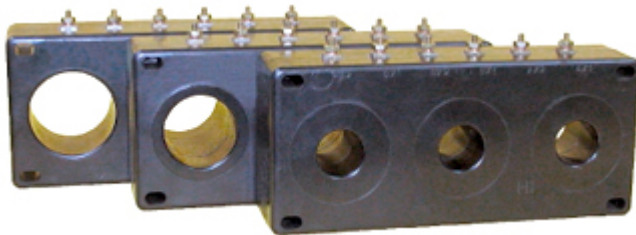


**CURRENT TRANSFORMERS**  
**Model 3P80, 3P81, 3P82**  
**Window Size: 1.00", 1.63", 2.00"**

REGULATORY AGENCY APPROVALS  
 E93779  LR89403  
 Manufactured to meet the requirements of ANSI/IEEE C57.13.  
 Classified by U.L. in accordance with IEC 44-1



**APPLICATION:**

3 phase relay, metering and motor overload protection.

**FREQUENCY:**

50-400 Hz.

**INSULATION LEVEL:**

600 Volts, 10 kV BIL full wave.

Terminals are brass studs No. 8-32 with one flatwasher, lockwasher and regular nut.

Flexible leads U.L. 1015, 1050C., CSA approved , No. 16 AWG , 24. long are available.

Approximate weight 4 lbs.

**3P80 (1.00" Dia. Window)**

CATALOG NUMBER	CURRENT RATIO	VA FOR 1% CLASS	ANSI METERING CLASS AT 60HZ					SECONDARY WINDING RESISTANCE (OHMS @ 75°C)
			BO.1	BO.2	BO.5	BO.9	B1.8	
3P80-101	100:5	7.5	2.4	2.4	4.8	—	—	0.034
3P80-151	150:5	10	1.2	1.2	2.4	4.8	—	0.052
3P80-201	200:5	20	0.6	1.2	2.4	2.4	4.8	0.069
3P80-301	300:5	30	0.6	0.6	1.2	2.4	2.4	0.103

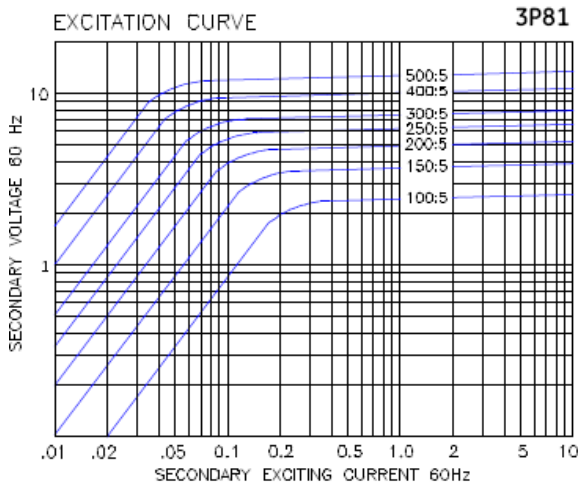
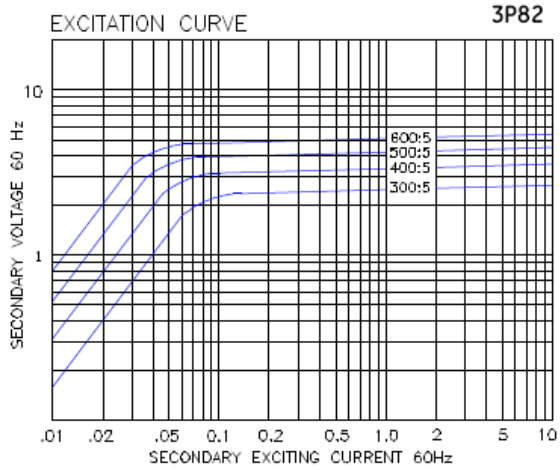
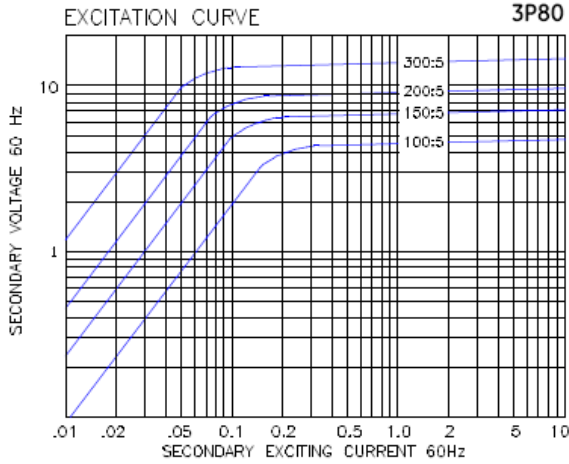
**3P81 (1.63" Dia. Window)**

CATALOG NUMBER	CURRENT RATIO	VA FOR 1% CLASS	ANSI METERING CLASS AT 60HZ					SECONDARY WINDING RESISTANCE (OHMS @ 75°C)
			BO.1	BO.2	BO.5	BO.9	B1.8	
3P81-101	100:5	2.5	2.4	4.8	—	—	—	0.031
3P81-151	150:5	7.5	2.4	2.4	4.8	—	—	0.046
3P81-201	200:5	10	1.2	1.2	2.4	4.8	—	0.061
3P81-251	250:5	12	0.6	1.2	2.4	4.8	—	0.077
3P81-301	300:5	10	0.6	0.6	1.2	2.4	4.8	0.092
3P81-401	400:5	25	0.6	0.6	1.2	2.4	4.8	0.122
3P81-501	500:5	40	0.6	0.6	1.2	1.2	2.4	0.153

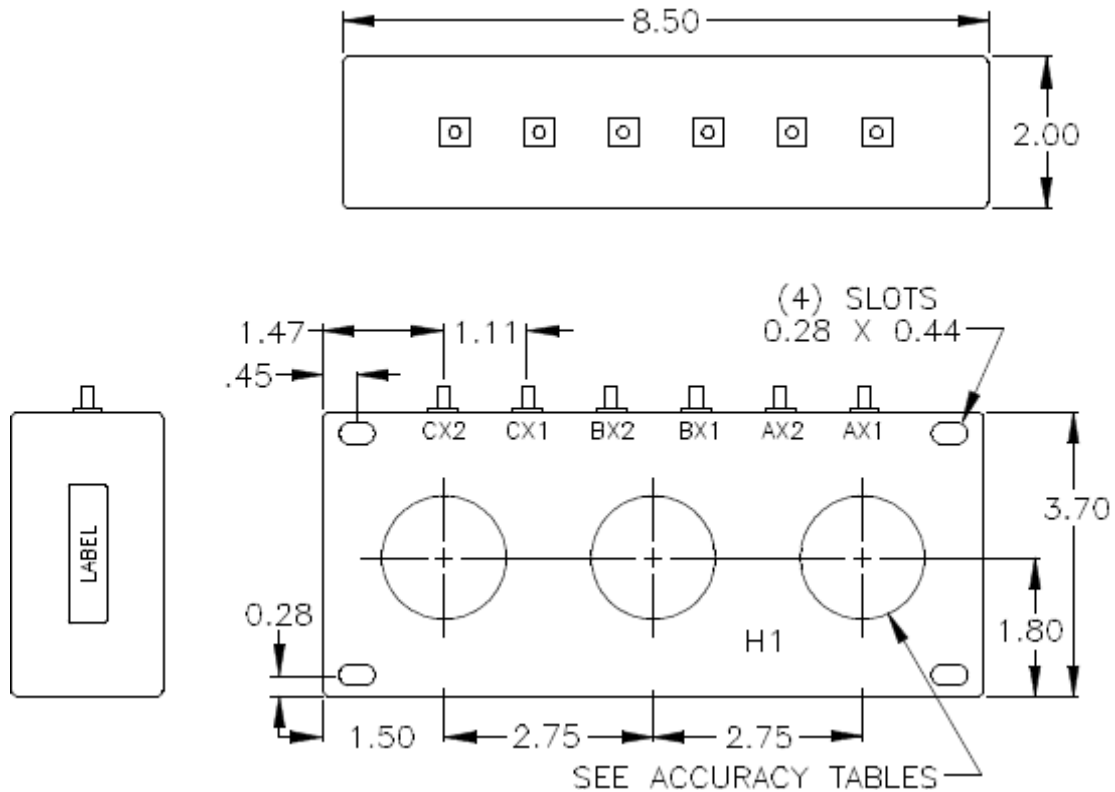
**3P82 (2.00" Dia. Window)**

CATALOG NUMBER	CURRENT RATIO	VA FOR 1% CLASS	ANSI METERING CLASS AT 60HZ					SECONDARY WINDING RESISTANCE (OHMS @ 75°C)
			BO.1	BO.2	BO.5	BO.9	B1.8	
3P82-301	300:5	2	2.4	2.4	4.8	—	—	0.106
3P82-401	400:5	4	1.2	2.4	2.4	4.8	—	0.142
3P82-501	500:5	7	1.2	1.2	2.4	2.4	—	0.177
3P82-601	600:5	10	1.2	1.2	2.4	2.4	4.8	0.212

## Models 3P80, 3P81, 3P82



**Notes:** Holes at the top of the transformer case can be used for attaching auxiliary device mounting poles, (not supplied). If the application requires transformer mounted relays, etc., then transformer can be ordered with secondary leads configured in various ways.  
(Consult Your AYA Representative).



**CURRENT TRANSFORMERS**  
**Model 3P2027**



**WINDOW SIZE: 2.0"**

**INSULATION CLASS:**

0.6kV.BIL 10kV. Full wave

50-400 Hz

**APPLICATION: 3 PHASE for Ammeters, Watthour Meters, and Wattmeters.**

**Fully Encapsulated.**

**Indoor/outdoor applications**

**CONTINUOUS THERMAL RATING:**

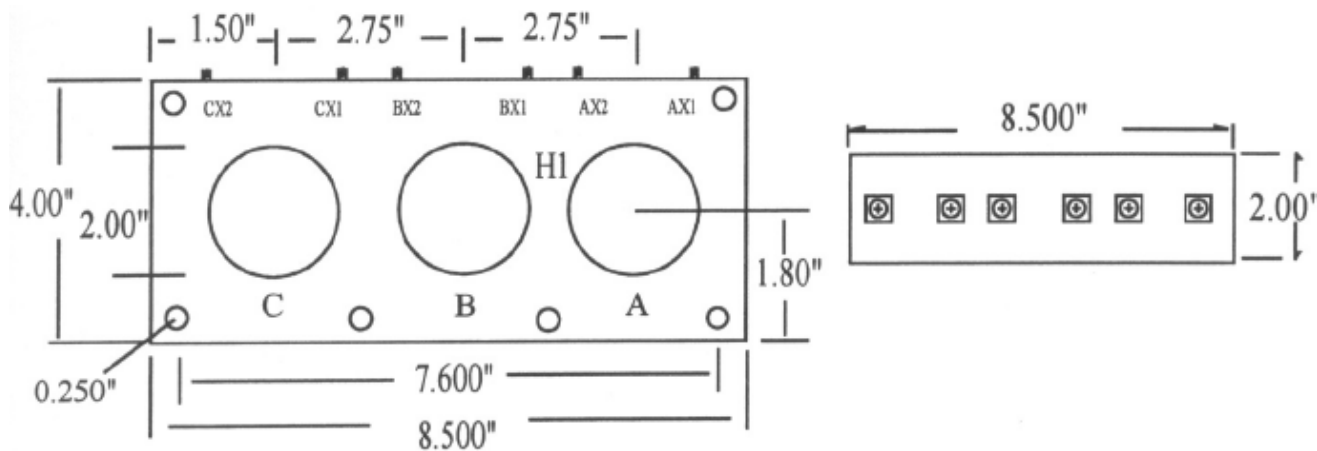
1.33 AT 30C. amb.; 1.0 AT 55 C. amb.

**Standard 5-amp secondary.**

**Others Available**

**CURRENT RANGE:**

200 TO 1200 AAC



**3P2027-\*\***

- Terminals are brass No. 10-32 UNC.
- Mounting brackets optional.
- Additional ratios available.
- Approximate weight 4.5 lbs.
- Made in United States of America

**NOTE: 600:5 and up has an Rf. Of 1.0 @ 30C. amb.**

*Similar to ITI models 3P82*

CATALOG NUMBER	CURRENT RATIO AMPERES	V.A. FOR +/- 1% CLASS	ANSI METERING CLASS AT 60Hz			
			BO.1	BO.2	BO.5	BO.9
*-100	100:5	1.0	4.8	-	-	-
*-150	150:5	1.0	4.8	-	-	-
*-200	200:5	1.5	2.4	4.8	-	-
*-250	250:5	2.0	2.4	4.8	-	-
*-300	300:5	2.0	2.4	2.4	4.8	-
*-400	400:5	4.0	1.2	2.4	2.4	4.8
*-500	500:5	7.0	1.2	1.2	2.4	2.4
*-600	600:5	10.0	1.2	1.2	2.4	2.4
*-750	750:5	12.0	1.2	1.2	1.2	2.4
*-800	800:5	15.0	0.6	1.2	1.2	2.4
*-1000	1000:5	15.0	0.3	0.6	0.6	1.2
*-1200	1200:5	15.0	0.3	0.6	0.6	1.2