

CURRENT TRANSFORMERS

Model 142

Window Size: 7.25"

REGULATORY AGENCY APPROVALS



E93779 LR89403
Manufactured to meet the requirements of ANSI/IEEE C57.13.
Classified by U.L. in accordance with IEC 44-1



Approximate weight 31 lbs.

APPLICATION:

Relaying and metering.

FREQUENCY:

50.400 Hz.

INSULATION LEVEL:

600 Volts, 10 kV BIL full wave.

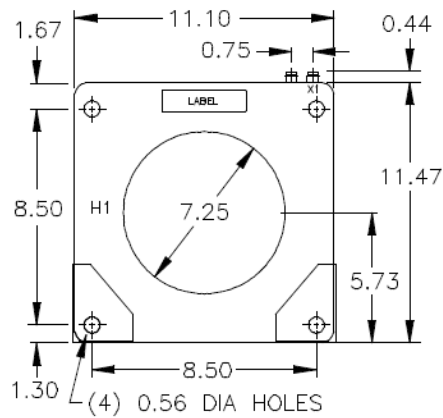
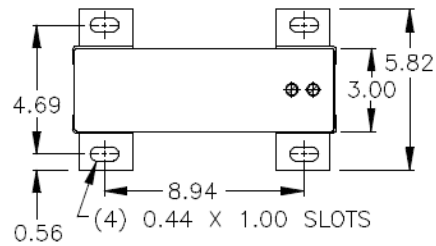
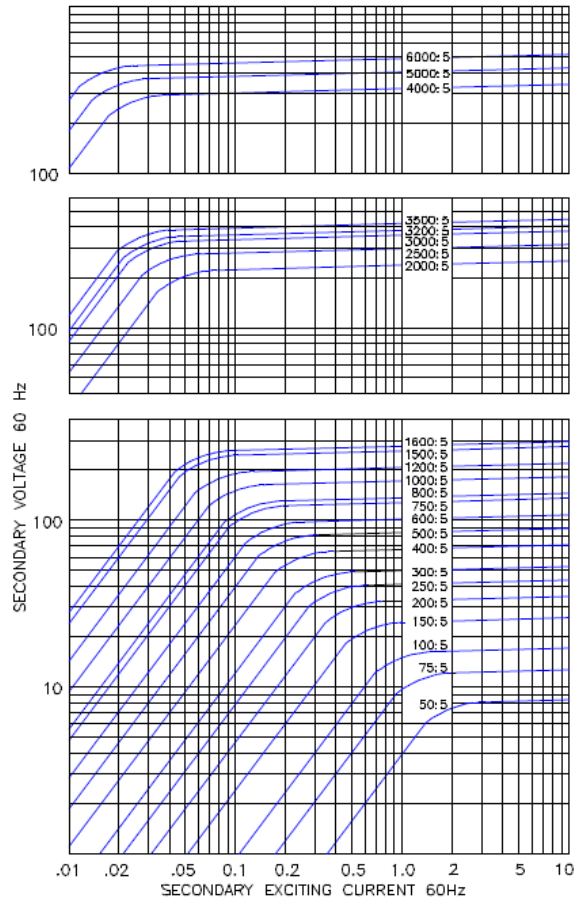
Terminals are brass screws No. 10-32 with one flatwasher and lockwasher.

Order mounting bracket kit 0221B00529 separately.

Multi-ratios available on request.

CATALOG NUMBER	CURRENT RATIO	RELAY CLASS	ANSI METERING CLASS AT 60HZ					SECONDARY WINDING RESISTANCE (OHMS @ 75°C)	CONTINUOUS THERMAL RATING FACTOR	
			BO.1	BO.2	BO.5	BO.9	B1.8		@ 30°C	@ 55°C
142-500	50:5	—	—	—	—	—	—	0.031	2.0	2.0
142-750	75:5	—	2.4	4.8	—	—	—	0.035	2.0	2.0
142-101	100:5	C10	1.2	2.4	4.8	—	—	0.051	2.0	2.0
142-151	150:5	C10	1.2	1.2	2.4	4.8	—	0.070	2.0	2.0
142-201	200:5 *	C20	0.6	0.6	1.2	2.4	4.8	0.102	2.0	2.0
142-251	250:5 *	C20	0.6	0.6	1.2	1.2	2.4	0.127	2.0	2.0
142-301	300:5 *	C30	0.3	0.3	0.6	1.2	2.4	0.153	2.0	2.0
142-401	400:5 *	C50	0.3	0.3	0.3	0.6	1.2	0.196	2.0	2.0
142-501	500:5 *	C50	0.3	0.3	0.3	0.6	0.6	0.252	2.0	2.0
142-601	600:5 *	C50	0.3	0.3	0.3	0.3	0.6	0.255	2.0	2.0
142-751	750:5 *	C100	0.3	0.3	0.3	0.3	0.3	0.304	2.0	1.5
142-801	800:5 *	C100	0.3	0.3	0.3	0.3	0.3	0.336	2.0	1.5
142-102	1000:5 *	C100	0.3	0.3	0.3	0.3	0.3	0.486	2.0	1.5
142-122	1200:5 *	C100	0.3	0.3	0.3	0.3	0.3	0.735	1.5	1.0
142-152	1500:5 *	C200	0.3	0.3	0.3	0.3	0.3	0.918	1.5	1.0
142-162	1600:5 *	C200	0.3	0.3	0.3	0.3	0.3	0.979	1.33	1.0
142-202	2000:5 *	C200	0.3	0.3	0.3	0.3	0.3	0.544	2.0	1.5
142-252	2500:5 *	C200	0.3	0.3	0.3	0.3	0.3	1.066	1.5	1.0
142-302	3000:5 *	C200	0.3	0.3	0.3	0.3	0.3	1.280	1.0	0.8
142-322	3200:5 *	C200	0.3	0.3	0.3	0.3	0.3	1.365	1.0	0.8
142-352	3500:5 *	C200	0.3	0.3	0.3	0.3	0.3	1.493	1.0	0.8
142-402	4000:5 *	C200	0.3	0.3	0.3	0.3	0.3	0.986	1.33	1.0
142-502	5000:5 *	C200	0.3	0.3	0.3	0.3	0.3	1.023	1.33	1.0
142-602	6000:5 *	C200	0.3	0.3	0.3	0.3	0.3	2.298	1.0	0.6

EXCITATION CURVE



CURRENT TRANSFORMERS
Models 72113 RW & SH



WINDOW SIZE: 7.25"

INSULATION CLASS:

0.6kV.BIL 10kV. Full wave

50-400 Hz

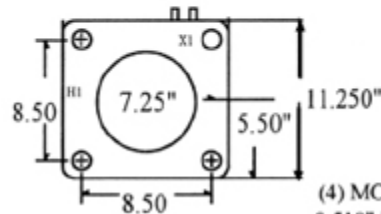
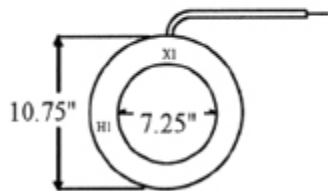
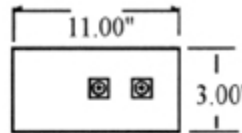
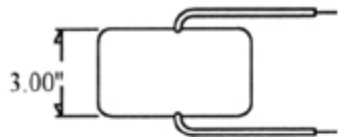
APPLICATION: For Metering, Wattmeters, Ammeters, and Relays.

Fully Encapsulated.
Indoor/outdoor applications

CONTINUOUS THERMAL RATING:
1.33 AT 30C. amb.; 1.0 AT 55 C. amb. Average.

Standard 5-amp secondary.
Others Available

CURRENT RANGE:
50* 100 TO 6000 AAC



Model 72113RW-**

Model 72113SH-**

(4) MOUNT HOLES
0.510" DIAMETER.

- Flexible Leads are UL 3173 125 degree C. CSA approved, #16 AWG 24" long.
 - Non-Standard Length to be specified
 - Terminals are brass No. 10-32 UNC.
 - Mounting brackets optional, order No. 8111-MBK.
 - Additional ratios available
 - Approximate weight 31 lbs.
 - Made in United States of America
 - NOTE: 2400:5 and up has an Rf. of 1@30C.amb
- Similar to ITI models 142*

CATALOG NUMBER	CURRENT RATIO	RELAY CLASS	ANSI METERING CLASS AT 60 Hz				
			B0.1	B0.2	B0.5	B0.9	B1.8
**_100	100:5	C10	1.2	2.4	-	-	-
**_200	200:5	C20	0.6	0.6	1.2	2.4	2.4
**_400	400:5	C50	0.3	0.3	0.3	0.6	1.2
**_500	500:5	C50	0.3	0.3	0.3	0.6	0.6
**_600	600:5	C100	0.3	0.3	0.3	0.6	0.6
**_800	800:5	C100	0.3	0.3	0.3	0.3	0.3
**_1000	1000:5	C100	0.3	0.3	0.3	0.3	0.3
**_1200	1200:5	C200	0.3	0.3	0.3	0.3	0.3
**_1500	1500:5	C200	0.3	0.3	0.3	0.3	0.3
**_2000	2000:5	C200	0.3	0.3	0.3	0.3	0.3
**_2500	2500:5	C200	0.3	0.3	0.3	0.3	0.3
**_3000	3000:5	C200	0.3	0.3	0.3	0.3	0.3
**_4000	4000:5	C200	0.3	0.3	0.3	0.3	0.3
**_5000	5000:5	C200	0.3	0.3	0.3	0.3	0.3
**_6000	6000:5	C200	0.3	0.3	0.3	0.3	0.3