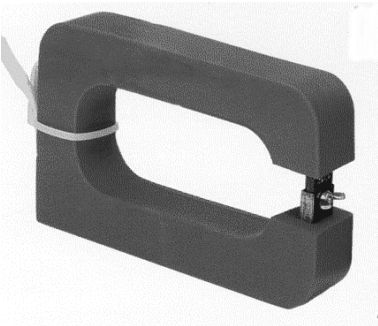




AFC and AFCL

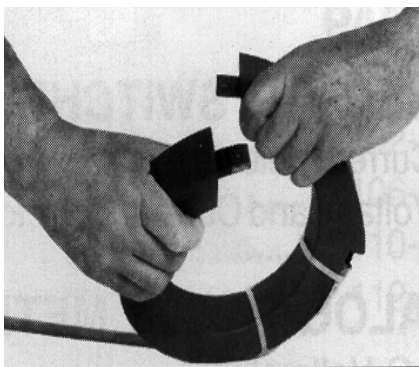
Flexible Current Transformers

Commercial and UL Recognized

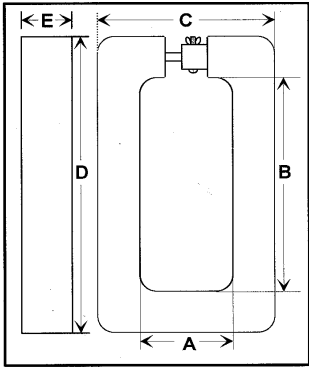
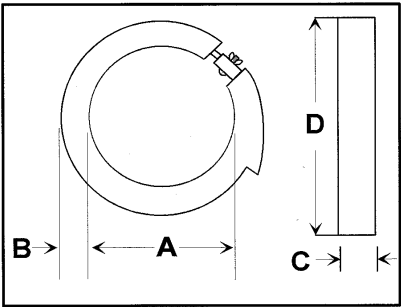


The **AFC** transformers are flexible current transformers designed for use in AC current metering and energy measurement applications. They are available with a full scale ranging from 200 to 6000 Amperes AC and an output of 1 Ampere, 3 Amperes or 5 Amperes for use with standard ammeters, wattmeters, varmeters, watthour and varhour meters, relays and electrical transducers. The transformer's core contains directional silicon steel. It is encapsulated in silicone rubber for protection from moisture, dirt, oil and corona. The core remains flexible in the temperature range of -45 to +200 degrees Celsius. The transformers include an internal voltage clamping circuit which prevents dangerous voltage across the secondary winding from developing if the load is removed accidentally while the transformer is located around an active conductor. The clamping circuit is triggered within 10 microseconds when the output voltage exceeds 40 volts and limits it to less than one volt.

The **AFCL** transformers are special versions that are recognized by the Underwriters Laboratories and are available with an output of 5-Amperes.



OUTLINE DIMENSIONS:



DIAMETER	ROUND			
A	B	C	D	
4	1-1/4"	1-1/2"	6-1/2"	
6	1-1/4"	1-1/2"	8-1/2"	
8	1-1/4"	1-1/2"	10-1/2"	
11	1-1/4"	1-1/2"	13-1/2"	
18	1-1/4"	1-1/2"	20-1/2"	

DIAMETER	RECTANGULAR				
A	B	C	D	E	
2-3/4"	6-5/8"	5-1/2"	9-3/8"	1-1/2"	
4"	11"	6-1/2"	13-3/8"	1-1/2"	

12-foot output wires. Black wire marked X1. White wire marked X2.

SPECIFICATIONS

INPUT CURRENT RANGES: 200 to 6,000 AAC
 OUTPUT OPTIONS: 0-1, 0-3 or 0- 5 AAC
 ACCURACY CLASS: 1%, 2%, 3% or 4% (SEE CHARTS)
 MAX. CONTINUOUS CURRENT: 25% ABOVE FULL SCALE
 MAX. OPERATING VOLTAGE: 600 VOLTS
 INSULATION IMPULSE TEST: 10,000 Volts
 FREQUENCY: 50 - 400 Haz
 TEMPERATURE RANGE: -10 to +50 Deg. C
 FLEXIBILITY TEMP. RANGE: -45 to +200 Deg. C

Applications and Features

FOR EASY INSTALLATION ON LARGE BUSBARS OR CABLE CONDUCTORS.
 FLEXIBLE DIRECTIONAL SILICON STEEL CORE.
 SILICON RUBBER ENCAPSULATION.
 12-FOOT OUTPUT LEADS WITH SPADE CONNECTORS.
 INTERNAL OUTPUT PROTECTION CIRCUIT LIMITS THE OUTPUT VOLTAGE TO LESS THAN 40 VOLTS WHEN THE LOAD IS REMOVED ACCIDENTALLY.

Specifications subject to change without notification

AFC - COMMERCIAL

CURRENT RATIO	ROUND					RECTANGULAR			Accuracy	Burden
	4"	6"	8"	11"	18"	2.75" x 6.5"	4" x 11"			
	AFC4-	AFC6-	AFC8-	AFC11-	AFC18-	AFCR-	AFCS-			
250:5	201-5							4%	2VA	
300:5	251-5							4%	2VA	
400:5	301-5	301-5						4%	2VA	
500:5	401-5	401-5				401-5		3%	2VA	
600:5	501-5	501-5				501-5		3%	3VA	
800:5	601-5	601-5				601-5		2%	5VA	
1000:5	801-5	801-5				801-5		2%	5VA	
1200:5	102-5	102-5	102-5			102-5		1%	5VA	
1500:5	122-5	122-5	122-5			122-5		1%	5VA	
1600:5	152-5	152-5	152-5	152-5		152-5	152-5	1%	15VA	
2000:5	162-5	162-5	162-5	162-5		162-5	162-5	1%	15VA	
2400:5	202-5	202-5	202-5	202-5	202-5	202-5	202-5	1%	25VA	
2500:5		242-5	242-5	242-5	242-5	242-5	242-5	1%	30VA	
3000:5		252-5	252-5	252-5	252-5	252-5	252-5	1%	35VA	
3500:5		302-5	302-5	302-5	302-5	302-5	302-5	1%	45VA	
4000:5		352-5	352-5	352-5	352-5	352-5	352-5	1%	45VA	
5000:5		402-5	402-5	402-5	402-5	402-5	402-5	1%	45VA	
6000:5		502-5	502-5	502-5	502-5	502-5	502-5	1%	45VA	
		602-5	602-5	602-5	602-5	602-5	602-5	1%	45VA	
Average Weight	3.5 Lbs. (1.6 Kg.)	4.25 Lbs. (1.9 Kg.)	5.5 Lbs. (2.5 Kg.)	7.5 Lbs. (3.4 Kg.)	11 Lbs. (5.0 Kg.)	4.25 Lbs. (1.9 Kg.)	6.35 Lbs. (2.9 Kg.)			

AFCL - UL RECOGNIZED

RATIO	AFCL4-	AFCL6-	AFCL8-	AFCL11-		AFCLR-	AFCLS-	Accuracy	Burden
200:5	201-5							4%	2VA
250:5	251-5							4%	2VA
300:5	301-5	301-5						4%	2VA
400:5	401-5	401-5				401-5		3%	2VA
500:5	501-5	501-5				501-5		3%	3VA
600:5	601-5	601-5				601-5		2%	5VA
800:5	801-5	801-5				801-5		2%	5VA
1000:5	102-5	102-5	102-5			102-5		1%	5VA
1200:5	122-5	122-5	122-5			122-5		1%	5VA
1500:5	152-5	152-5	152-5	152-5		152-5	152-5	1%	15VA
1600:5	162-5	162-5	162-5	162-5		162-5	162-5	1%	15VA
2000:5	202-5	202-5	202-5	202-5		202-5	202-5	1%	25VA
2400:5		242-5	242-5	242-5		242-5	242-5	1%	30VA
2500:5		252-5	252-5	252-5		252-5	252-5	1%	35VA
3000:5		302-5	302-5	302-5		302-5	302-5	1%	45VA
3500:5		352-5	352-5	352-5		352-5	352-5	1%	45VA
4000:5		402-5	402-5	402-5		402-5	402-5	1%	45VA
5000:5		502-5	502-5	502-5		502-5	502-5	1%	45VA
6000:5			602-5	602-5			602-5	1%	45VA